



See what light can do.



Professional LED lighting catalogue

PHILIPS

Philips awarded
Market Share Leadership of the Year in the Indian LED Lighting Market-2013 by Frost and Sullivan



Philips Lighting, leading the LED Lighting transformation

Index



**Why LED?
Why Philips?**

**10. Sustainability
and LED solutions**

**12. Journey of
LEDs at Philips**

**14. Applications of
LEDs**

Office

16. LEDs in office

18. Reception

20. Open plan office

22. Office cabins

24. Meeting rooms

Case study

26. Audi

28. Design agency
Reggs

30. Eternal Heart
Care Centre (EHCC)

32. Citibank

34. HCL Technologies

36. Cognizant
Technologies

38. Akshaya Pvt. Ltd.

40. Orbit Arya

42. Product range





Sustainability and LED solutions

Sustainability and respect for the environment are core values of Philips. With LED products and solutions, we are driving the shift towards the use of LED lighting products and solutions.

Journey of LEDs at Philips



Gonio-photometer in the photometric lab

Photometry lab

State of art facility (one of the biggest lab in Asia) for photometric measurements using rotating mirror type Gonio-photometer. It is used to measure the light distribution of luminaires in a 3 dimensional space. The measurements may be used to derive photometric characteristics and is transformed for publication in graphical form such as polar curve. This is the most appropriate type of Gonio-photometer for measuring LED Luminaires with more than 98% accuracy.



Thermal and electrical lab

Thermal and electrical lab

Luminaires are tested here as per IEC and IS standards. Fully equipped to conduct tests for thermal endurance, high voltage and insulation resistance, heat-fire-tracking, electrical performance measurement, switching cycle tests. This lab is instrumental for endorsement of product quality.

Applications of LEDs



Office



Industry



LEDs in office

We offer a complete portfolio of LED lighting products and solutions for various application areas within an office. From open office areas to meeting rooms and other areas, our range of general lighting, functional lighting and task lighting solutions, meet your need.





Reception

Light has the power to set the mood from the moment visitors walk into your reception. Our LED products are beautifully designed to create the most dramatic effects, from undulating waves of light, to crystal clear accents, and soft, colorful ambiances. Whether your office style is funky or functional, we have the right LED products for you.



Open plan office

Open plan offices are now far more dynamic. We believe that office lighting should be as well. Create a comfortable ambience that responds to natural light levels, switch lights off automatically when they're not needed. With our smart solutions it's easy to create the most inspiring light effects without compromising on the quality of light. And because they're designed to be highly-efficient, they'll even make your energy bills look good.



Office Cabins

Cell offices and internal rooms that lack natural light require lighting more often and thus incur higher energy costs. Our intelligent solutions reduce energy consumption with luminaires that react to natural light, lighting controls* that glow on approach and sensors* that switch lights off when no one's around. You can now work smarter and save significantly on energy costs.

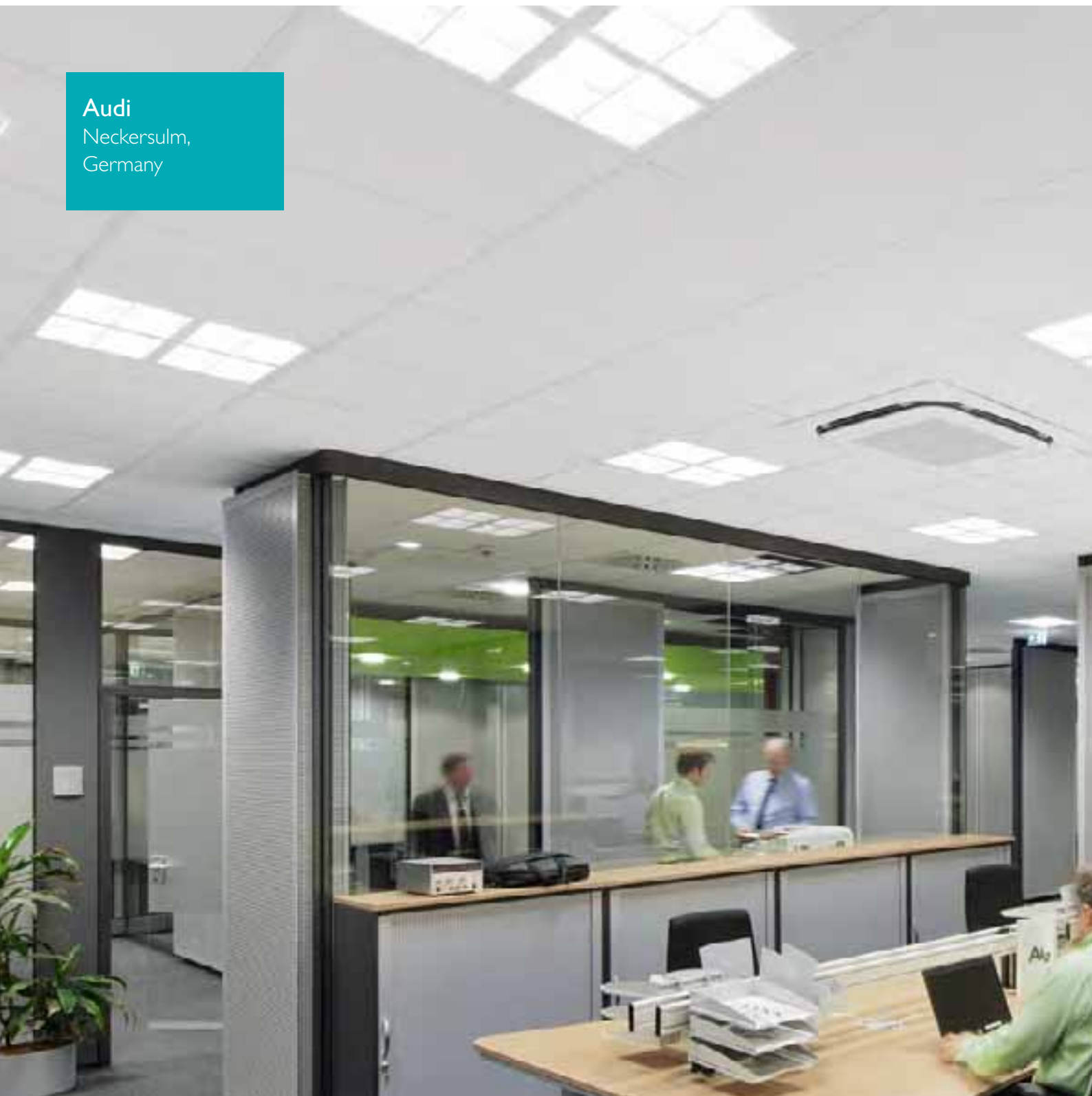
*For more information on controls and sensors please visit <http://www.lighting.philips.com>



Meeting rooms

Lighting has a profound effect on the way people feel. Tailor it to the task at hand and you can make your meeting room a far more effective space, enhancing wellbeing, creating excitement or providing an air of quiet calm. Our innovative solutions take LED lighting to new levels of sophistication. Clever features bring out the best in your meeting room and the people who use it.

Audi
Neckersulm,
Germany



Design agency
Reggs
Amsterdam, The
Netherlands



Eternal Heart
Care Centre (EHCC)
Jaipur, India



Citibank
Gurgaon, India



HCL Technologies
Gurgaon, India



Cognizant
Technologies
Bangalore, India



Akshaya Pvt. Ltd.
Chennai, India



Orbit Arya
Mumbai, India



GreenLED



Variant



General description

GreenLED combines modern product design, latest LED technology and reliable heat management to deliver a long lasting, efficient and cost effective solution for offices and retail spaces.

Features

- 50%* energy saving
- 5 times more life over CFLs
- Long life of 40000* hours

Specifications	
Type	BBS170
Light source	Philips Rebel ES
Lumen output	850lm
Light color	5000K/4000K
Power consumption	15W
Voltage	170-270V AC 50 Hz
Optics	High efficiency optics with high reflective diffuser providing efficient glare free lighting
Driver	Non-integral constant current electronic driver with a gear tray
Color	White
Lifetime	40000 burning hrs. (At L70)

Sereno LED



General description

Philips Sereno, a range of office luminaires with a wide range of optics specially designed to meet the highest standard of work place lighting. Sereno luminaires offer the latest technology for high comfort and optical efficiency in a miniature profile. Sereno is available in surface/suspended and wall mounted versions in a variety of dedicated optics such as D8 Mirrors, Opal Diffuser and indirect optics. Sereno offers the best combination of performance, energy efficiency, aesthetics and flexibility of designing.

Features

- Consistent light output
- Energy efficient
- Low maintenance
- Ultra flat light with only 47mm in height

Specifications	
Type	TBS869/528
Light source	Non- Replaceable LED boards (33x8) LED's
Lumen output	3275 lm
Light color	White
Power consumption	42W
Voltage	220-240V
Optics	High Efficiency OPAL Diffuser (OD) Transitivity > 87%
Gear	Constant Current Electronic Gear PF > .9 Efficiency > 85% THD < 25%
Material	• Extruded Aluminum Housing • CRCA Front frame with High efficiency Opal Diffuser
Color	White
Installation	• Directly Onto RCC Ceiling with the help of special accessories. • Suspended Through ZPS524 SMS

FullGlow



General description

FullGlow is a beautifully designed luminaire which is bound to delight the occupants with refreshing and comfortable experience through its pure form and glare-free light. It comes in two versions - standard and high efficiency version. With upto 30%* energy savings and maintenance free operation, this product is an owner's delight. This luminaire conforms to key quality demands of office lighting (UGR < 19, L65 < 1000 cd/m², Ra = 80 at CCT 4000°K and 6500°K).

Features

- >30%* energy saving
- Maintenance free
- Long life of 50000* hours
- CRI = 80/70

Specifications		
Type	FullGlow Standard	FullGlow High efficiency
Light Source	MIDFLUX LED	MIDFLUX LED
Lumen OP	2600	3100
Light Color	4000K/6500K	4000K/6500K
Power Consumption	40W	40W
Voltage	220-240V AC, 50/60 Hz	220-240V AC, 50/60 Hz
Driver	Electronic In-Built PF > .9 , THD < 33% , IEC Compliant for Safety , Performance & EMI	Electronic In-Built PF > .9 , THD < 33% , IEC Compliant for Safety , Performance & EMI
Material	Housing : Metallic CRCA powder coated body Diffuser : high efficiency opal diffuser	Housing : Metallic CRCA powder coated body Diffuser : high efficiency Lumio Diffuser
Installation	Recessed	Recessed
Color	White	White
CRI	80/ 70	80/ 70

GreenSquare



General description

Office lighting should be advanced, energy efficient and one which complements interiors. GreenSquare, Philips LED luminaire, is specially developed to meet all such office requirements. It consumes significantly less energy and offers longer life, resulting in lower operational cost*. GreenSquare LED solution offers an attractive TCO over conventional solutions.

Features

- 40%* energy saving
- Long Life of 40000* hours
- Maintenance free
- Eco-friendly

Specifications	
Type	RC104B
Light source	Mid flux LED
Lumen output	2900lm
Light color	6500K
Power consumption	39W
Voltage	220V-240V AC 50Hz
Driver	Constant current electronic driver
Optics	Diffused
Material	CRCA housing, polycarbonate diffuser
Color	White
CRI	>70

Stratus



General description

Stratus is a suspended up-down LED lighting luminaire. It seamlessly integrates with the interior of your office with its end to end mounting features.

Features

- Consistent light output
- Maintenance free
- CRI >80
- Long life of 50000* hours

Specifications	
Type	Stratus Pendant Mounted
Light Source	MIDFLUX LED
Lumen OP	4400 lm (3300lm UP / 1100lm DN)
Light Color	4000K/5000K
Power Consumption	54W
Voltage	220-240V AC, 50/60 Hz
Driver	Electronic In-Built PF > .9 , THD < 20% , IEC Compliant for Safety, Performance & EMI
Material	Housing : Extruded Aluminium Diffuser : high efficiency opal diffuser
Installation	Pendant Mounted
Color	Grey/ White
CRI	>80

DayWave



General description

Philips DayWave represents a milestone in design of office luminaires that makes your office really stand out. DayWave is designed to create an ambience that is inspirational, pleasant to work in, as well as enhancing wellbeing and performance. The natural rhythm of the waves of light can be combined flexibly to suit a variety of office spaces. An intuitive lighting control enables office users to adjust light output and tone to their personal taste.

Features

- Breakthrough and unique design
- Consistent light output
- Long life of 50000* hours

LuxSpace HE



Variant



General description

These LED downlights with superior aesthetics and build quality suitable for applications that require a green general lighting solutions for instance in offices, shops, hotels and hospitals. Their extremely low power consumption results in significant energy savings compared with traditional CFL downlights.

Features

- 50%* energy saving
- Long life of 50000* hours
- Good color rendering

Specifications				
Type	LuxSpace Micro BBS478	LuxSpace Mini BS488/489	LuxSpace compact BBS498/499	Luxspace Compact Power BBS496
Light source	DLED Micro	DLED Mini	DLED Compact	DLED Compact Power
System lm output	560lm (3000K) 620lm (4000K)	1000lm (3000K) 1100lm (4000K)	2000lm (3000K) 2200lm (4000K)	2750 (3000K) 3100 (4000)
System Power consumption	8W	13W	28W	40.5W
System performance*	68lm/W(3000K) 75lm/W (4000K)	74lm/W(3000K) 81lm/W (4000K)	72lm/W(3000K) 80lm/W (4000K)	70lm/W(3000K) 78lm/W (4000K)
Lifetime	50k hours (L70)	50k hours (L70)	50k hours (L70)	50k hours (L70)
CCT	3000K / 4000K	3000K / 4000K	3000K / 4000K	3000K / 4000K
RA	>80	>80	>80	>80
Driver/control	Fixed and dimmable	Fixed Dimmable (DALI)	Fixed Dimmable (DALI)	Fixed Dimmable (DALI)
IP	Option of IP54 Version	Option of IP54 Version	Option of IP54 Version	Option of IP54 Version
Accessories	Glass disk with frosted inner part in suspended position SG-FRC Frosted-glass halo ring in suspended position SG-HR-FR Opal glass in suspended position SG-O			

*Conditions apply

NovaGlow E14 Candle



General description

Philips NovaGlow E14 CANDLE integrates a high power LED light source with an unique lens design to give sparkle effect. It can replace up to 20W GLS candle.

Features

- Standard GLS Candle form factor
- Ultra Energy efficient, replacement up to 20W GLS
- Available in 4W
- 20,000* hours average life time
- No external driver is required
- No mercury, UV and IR
- RoHS complaint
- CCT: 2700K
- Dimmable

Product description	Wattage	Socket	Lifetime (hours)	Lumens output	Efficiency lm/W	Color Rendering Index	Color Temp.	Dimmable
Master LED 4W- E14 2700K 230V B35 CL DIM	4	E14	20,000	250	62	>80	2700	Yes

Master LED GU10



General description

Efficient accent lighting is now possible with GU10 MASTER LED lamp. With no heat, UV or IR in the beam, it outperforms halogen lighting in terms of lighting while saving on energy and maintenance costs.

Features

- Low energy consumption: 4 W / 35 W, 7 W / 50 W, 8 W / 50 W+ (230 V -240 V)
- Long life of 40,000* hours
- Clearly defined beam spread
- UV- and IR-free light for less heat and protection for heat-sensitive objects

Product description	Watt	Socket	Beam intensity (cd)	Beam angle	Lifetime (hours)	Lumens output	Efficiency lm/W	CRI	Color Temp.	Dimmable
D 7-50W GU10 2700K 25D	7	GU10	1250	25	40,000	300	46	>80	2700	No
D 7-50W GU10 2700K 40D	7	GU10	500	40	40,000	300	46	>80	2700	No
D 7-50W GU10 4000K 25D	7	GU10	1400	25	40,000	310	46	>80	4000	No
D 7-50W GU10 4000K 40D	7	GU10	650	40	40,000	310	46	>80	4000	No
D 7-50W GU10 5600K 25D	7	GU10	1400	25	40,000	310	46	>80	5600	No
D 7-50W GU10 5600K 40D	7	GU10	650	40	40,000	310	46	>80	5600	No

LEDs in industry

We believe in energy-efficient lighting solutions for industry that reduce environmental impact and save on cost, at the same time improve quality and productivity.





Production areas

A properly illuminated environment can help reduce production errors, while adaptable lighting systems ensure the right light is available for specific tasks, even when production cells are reconfigured. With lighting solutions that fit the tasks at hand, the quality of output can improve so that production errors and accidents drop. Lighting solutions from Philips offer long life and better light output, meaning better conditions on the production floor.



Warehouses

Better work environments can elevate worker motivation and increase their productivity. By reducing energy loads and waste, new energy efficient lamps and fixtures can help companies save money on energy and maintenance. Philips lighting solutions for the industrial warehouses can help you meet those expectations, reducing costs while driving quality and efficiency.

Royal Mail NDC
Daventry, UK





East India
Commercial Co.
Andhra Pradesh, India

L&T Steel
Hazira, India



Nestle
Tahliwal, India



LEDtube

Also used in
Retail



General description

Philips Essential LEDtube integrates LED light source with frosted cover design into traditional linear fluorescent form while consuming only 20W and offers energy saving upto 50%.

Features

- Attractive payback
- No glare discomfort and uniform light distribution
- No external driver required
- Lifetime of 40000* hours

Product description	Wattage	Equivalent Fluorescent Wattage (W)	Volatage	Cap	Length (mm)	Beam angle	Lifetime (Hrs)	Lumen output (Lm)	Color Temp. (K)	CRI*
Essential LEDtube 1200mm 20W840 T8	20	36	220-240	G13	1200	165	40000	1600	4000	80
Essential LEDtube 1200mm 20W865 T8	20	36	220-240	G13	1200	165	40000	1600	6500	80
Essential LEDtube 600mm 10W840 T8	10	18	220-240	G13	600	165	40000	800	4000	80
Essential LEDtube 600mm 10W865 T8	10	18	220-240	G13	600	165	40000	800	6500	80

EnduraLED- Well Glass



General description

Innovative LED based well glass luminaire for direct replacement of 70W HPSV conventional fixtures. EnduraLED has the potential to save > 40%* energy without on compromising lighting parameters.

Features

- >40%* energy saving
- Complies with IP 66 ingress protection
- IK08

Specifications	
Type	BY200P LED 27S CW PSU SI PC
System wattage	42 W
Lumen output	2700 lm
Color temperature	6500 K
CRI	Typical 70
THD	≤10%
PF	>0.95
IP	IP 66
IK	IK 08
Housing	High pressure die cast aluminum
Mounting	Dedicated mounting bracket
Front cover	Polycarbonate diffuser



General description

GreenPerform LED batten is an innovative solution for conventional twin lamp battens. It is designed to be a direct replacement for conventional battens providing energy savings of more than 30% with no compromise on lighting performance. Integrally designed and developed by Philips, this product provides seamless adoption towards industry leading technology.

Features

- 30%* energy saving
- Efficacy > 90lm/W
- Long life of 50000* hours
- Maintenance free

Specifications	
Type	BN 208C (Standalone)
Lumen/Watt	3600 lm / 40W
Length	1.2m
Sys. Efficacy	~90 lm/W
CCT	NW (4000K)
CRI	>80
SDCM	<3.5
Optics	Frosted diffuser
LED	Philips Fortimo LP modular
Driver	Philips Xitanium® driver
IP	IP20
Class	Class I

LEDs in outdoor

Philips is committed towards improving the lives of the people by providing efficient and glare free lighting. Our products are eco-friendly and help customers in saving significantly on energy consumption and costs. Better lighting also makes people feel safe in night as in day.





Architectural lighting

Recognizing landmarks is an important step in developing a comprehensive approach to urban environments. Lighting a building, monument or architectural feature contributes to the identity of a place. Whether you are working on a single building or an entire master plan, Philips Lighting has state-of-the-art technologies and solutions, backed up by more than a century of lighting application expertise.



City centers

Lighting plays a central role in how people feel about their city, town or village. That is why the illumination of streets and pedestrian areas has evolved from simple functional lighting into a more demanding and creative discipline. Not only is light required so that people can drive, cycle and walk safely, it must be pleasing and inviting too. It should promote communication and wellbeing, encourage night-time socializing and complement night life. But luminaires also have an important architectural role. During the day they become an integral part of the street scene. Our range of architectural street luminaires are designed keeping this in mind, giving you a winning blend of performance and style.



Residential areas

For many years, residential lighting has been purely functional. Although safety, security and orientation are still essential, there is an ever growing need to improve quality of life and creating a pleasing identity for these areas through better lighting.



Roads and transport

With more than one hundred years of experience and expertise in the field of road lighting, we are in an ideal position to analyze market trends and create appropriate solutions. We apply technological innovation to the design and development of the road lighting products of the future, to meet the wishes and needs of our customers.

India Gate
New Delhi, India



Naya Raipur
Development
Authority
Raipur, India



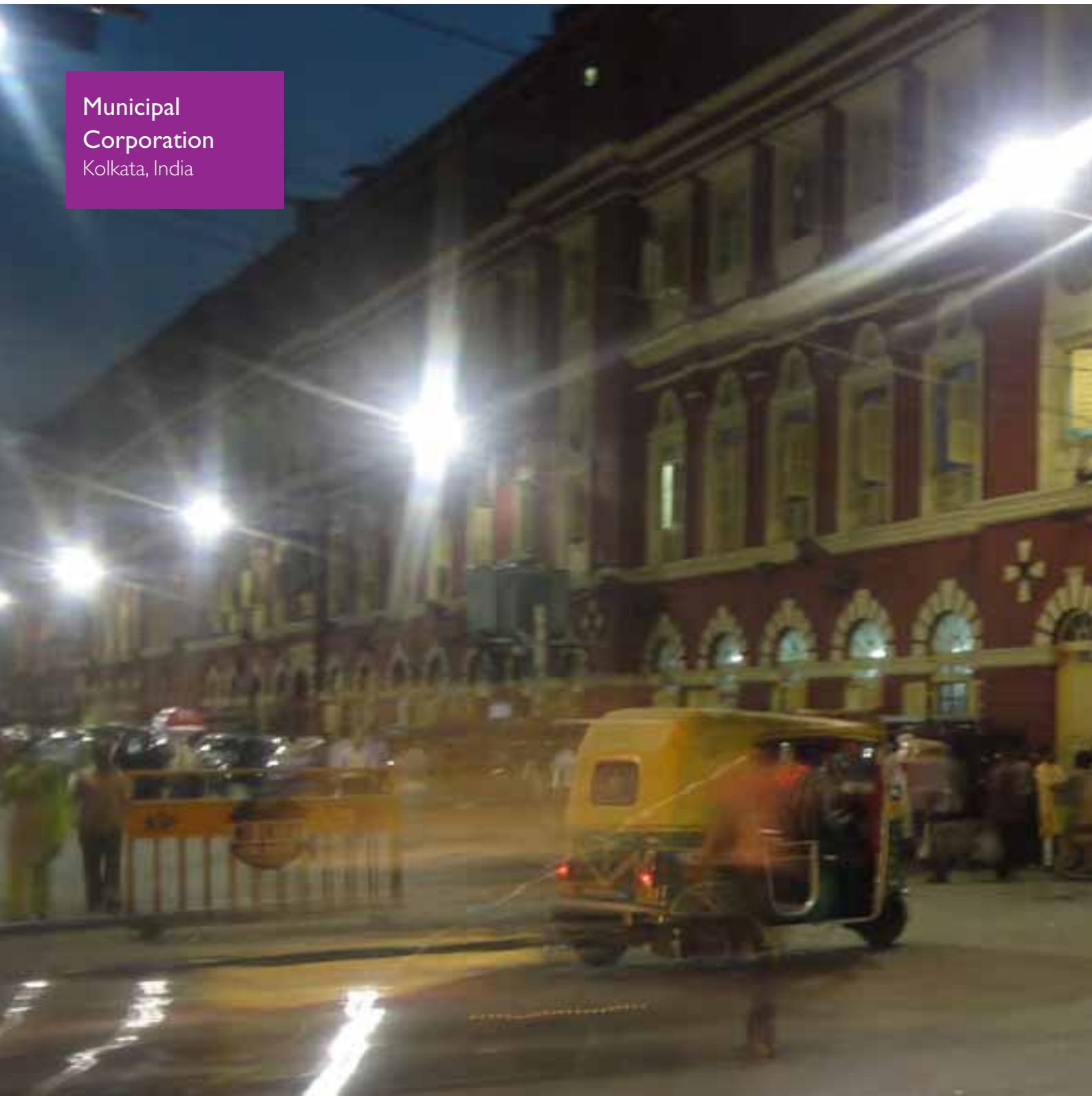
Municipal Council
Rajsamand, Rajasthan
India



City Centre
Terneuzen,
The Netherlands



Municipal
Corporation
Kolkata, India



Municipal
Corporation
Vijayawada, India



Haldia
Development
Authority
Haldia, India



GreenLine Smart



General description

GreenLine Smart is completely maintenance free luminaire and ensures trouble free operation with the use of LED source and electronic driver. Specially designed polycarbonate cover reduces glare, spreads light evenly and is impact resistant. It is completely reliable for Indian conditions as it operates on a wide range of supply voltages. GreenLine Smart also has IP 65 protection with very high ingress protection against dust and water.

Features

- Aesthetically designed
- Upto 50%* energy saving
- Long life of 50000* hours
- Versatile applications
- IP 65 protection
- Complies to IEC 60598 and IS 10322
- High impact resistance due to Poly carbonate cover
- Meets IS 1944 lighting requirement for B2 category road

Specifications	
Type	BRP020
Light source	High Power LED
Lumen output from luminaire	1650lm
Color	Cool white
Power consumption	25W
Nominal Voltage	220V-240V
Driver	Integral
CRI	70
Mounting (OD)	32-40mm
Weight	1.0Kg.
Protection	IP 65, Class I

Due to continuous change in LED technology the above values might change.

GreenLine Xtra



General description

Philips new maintenance free LED luminaires with urban looks for city roads offering best in class energy savings. Existing luminaires can be easily upgraded to new LED technology with minimum changes in existing installation.

Features

- Aesthetically designed
- Upto 50%* energy saving
- Pressure die cast housing
- Long life of 50000* hours
- Options of cover Glass and poly carbonate cover
- IP 66 protection
- Meets ISI944 lighting requirement for A1 / A2 category road
- Complies to IEC 60598 and IS 10322
- Class I protection

Specifications	
Type	BRP322
Light source	High Power LED
Lumen output from luminaire	7000-12500lm
Color	Cool white
Power consumption	80-140W
Nominal Voltage	220V-240V
Driver	Integral
CRI	70
Mounting (OD)	42-60mm
Weight	6.5Kg.
Protection	IP 66, Class I

Please get in touch with local Philips colleagues if you are looking for lighting up bigger roads, where lumen output required is higher than 12500lm

Due to continuous change in LED technology the above values might change.

Roadstar



General description

Philips Roadstar road lighting luminaire is dark-sky compliant using unique, sealed optics with vibration resistant design, offering better light control and uniformity with upto 8 times spacing between poles and maintenance free operation. With a life class of upto 70,000 hours, this luminaire also comes with excellent thermal management system.

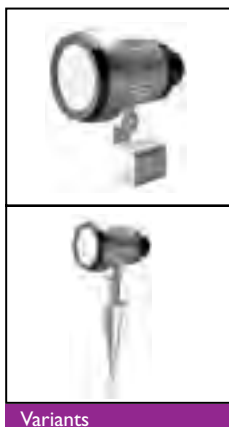
Features

- High energy savings
- Consistent light output
- Long life
- Maintenance free

Specifications	
Type	Roadstar
Light source	LED
Color	4000K
Lamp wattage (LED) range	40W-180W
System power range	45W-204W
Nominal voltage	220V-240V, 50Hz
Driver	Integral type
CRI	70
Mounting (OD)	60mm
Protection	IP 66, Class I

Due to continuous change in LED technology the above values might change.

LED Spot



Variants



General description

Philips LED spot lights are ideal for replacing conventional spot lights and provide accent lighting for a variety of applications. Easy to install, these products come with suitable mounting options like spike, clips & surface mounting.

Features

- Consistent light output
- Long life
- Maintenance free

Specifications		
Type	BGP310	BGP311
Light source	3 High Power LED	3 High Power LED
Color	WW, CW, Red, Green, Blue, Amber	WW, CW, Red, Green, Blue, Amber
Power consumption	6W	6W
Nominal voltage	220-240V, 50 Hz	220-240V, 50 Hz
Optics	12D/24D/36D	12D/24D/36D
Driver	Integral type	Integral type
CRI	70	70
Protection	IP 65, IK08	IP 65, IK08
Mounting Accessories optional	SPIKE (ZGP311)	

Due to continuous change in LED technology the above values might change.

AmphiLux



Variants



General description

AmphiLux surface and recess mounted spotlight range is designed to enhance outdoor social areas (gardens, terraces, fountains, waterfalls, etc.) with architectural lighting. AmphiLux is a family of LED spots featuring a stunning, sleek Italian design with a stylish chrome finish. These solutions can be used under water and in semi-wet and dry environments. Available in Micro, Mini and Compact sizes, this range offers a choice of dynamic white-light and colored-light versions for maximum flexibility in flood and accent lighting applications.

Features

- Consistent light output
- Maintenance free

Specifications		
Type	BBD400 Micro (1 x LED, Mono color version) BBC400 Micro (1 x LED, Mono color version) BBD410 Mini (4 x LED, Mono and Dynamic color version) BBD420 Compact (12 x LED, Mono and Dynamic color version)	BVD400 Micro (1 x LED, Mono color version) BVD410 Mini (4 x LED, Mono and Dynamic color version) BVD420 Compact (12 x LED, Mono and Dynamic color version)
Light source	High power LED's	High power LED's
Power	Micro versions: 1.5W Mini version (Mono color): 5W Mini version (Dynamic color): 4W Compact version (Mono color): 15W Compact version (Dynamic color): 12W	Micro versions: 1.5W Mini version (Mono color): 5W Mini version (Dynamic color): 4W Compact version (Mono color): 15W Compact version (Dynamic color): 12W
CCT	2700, 4000 and 6000 K for the Mono color versions 2700 - 6000 K for tunable white	2700, 4000 and 6000 K for the Mono color versions 2700 - 6000 K for tunable white
CRI	> 80 (2700 and 4000 K) > 70 (6000 K)	> 80 (2700 and 4000 K) > 70 (6000 K)
Corrosion resistance	For BBD versions: - Salt water resistant up to 35gr/L salinity - Chlorine resistant if water has a stable PH level between 6.8 and 8	Salt water resistant up to 35gr/L salinity Chlorine resistant if water has a stable PH level between 6.8 and 8
Operating temperature range, voltage	-20 to +35°C, 12V DC for Mono color versions	-20 to +35°C, 12V DC for Mono color versions
Material	Housing: - BBD versions: chromed brass Optical cover: hardened glass	Housing: chromed brass Optical cover: hardened glass

Vaya Linear



General description

Philips Vaya Linear is a cost effective, reliable white and color-changing light fixture for both exterior and interior use. Designed for creating fixed or dynamic colorful lighting effect, VAYA Flood is ideal for wall washing and grazing applications. Integrated Power for all variants and RDM discovery & addressing and DMX 512 control for VAYA Flood Color make this product easy to use with Philips controllers.

Features

- Consistent light output
- Maintenance free

Specifications		
Type	Vaya Linear Color (RGB)	Vaya Linear White
Height	102 mm (including surface mount base)	102 mm (including surface mount base)
Width	63.5 mm	63.5 mm
Length	333 or 1000 mm	333 or 1000 mm
Mounting	Location adjustable and tilting surface-mount bracket	Location adjustable and tilting surface-mount bracket
Source	High-brightness Red, Green and Blue LEDs	High-brightness White LEDs
Beam angle	Narrow (10° x 50°) or Wide (50°)	Narrow (10° x 50°) or Wide (50°)
Lumen output	330 lm (0.33m) / 1000 lm (1.0m) all colors on full	450 lm (0.33m) / 1350 lm (1.0m) for 4000K
Lumen maintenance	50,000 hrs L50 at 25°C	50,000 hrs L70 at 25°C
Input voltage	100~240VAC, 50/60 Hz	100~240VAC, 50/60 Hz
Housing	Extruded aluminum, anodized finish	Extruded aluminum, anodized finish
Weight	0.33m: 3.0 Lbs (1.3 Kg), 1.0m 7.4 Lbs (3.3 Kg)	0.33m: 3.0 Lbs (1.3 Kg), 1.0m 7.4 Lbs (3.3 Kg)
Connector	3-conductor whip for power, 1.5m long 2-Pair twisted whip for data, 1.5m long	3-conductor whip for power, 1.5m long
Lens	Tempered Glass	Tempered Glass
Control	DMX-512 control and RDM discovery and addressing (One address per fixture)	ON/Off, Not dimmable
Power consumption	13 W (0.33m), 41 W (1.0m)	15W (0.33m), 41W (1.0m)
Operating temperature	0 to 35 DegC	0 to 35 DegC
Protection rating	IP65, Wet location listed	IP65, Wet location listed
Certifications	CQC, CE, CB	CQC, CE, CB
CCT	-	3000K, 4000K

Philips smart LED landscape

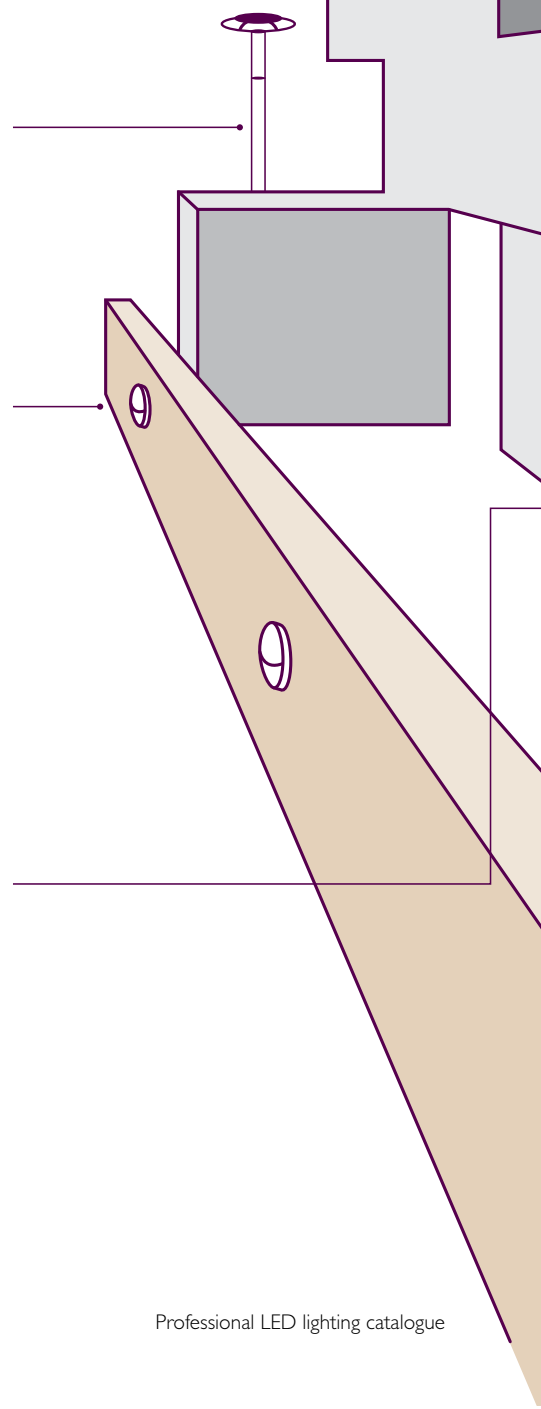
A total solution

At Philips, lighting urban landscapes is a passion as well as a science. From sleek designs, to excellence in engineering and excellent lighting performance, our Smart LED Landscape solution is cohesive and designed with attention to detail.

- All products are unified by a common design language making them seamless to combine and coordinate in your designs
- The lighting solutions are available in both warm white (3000K) and neutral white (4000K) color temperature, giving you choice and flexibility
- With full RoHS compliance, you have absolute peace-of-mind knowing that our products are free of toxic materials
- The exclusive use of LED technology also means an environmentally friendly lighting solution that needs less maintenance
- All our products have been engineered to a high degree of water and impact resistance (proven IP and IK standards) making them ideal candidates for outdoor environments

In short, our solution is just perfect for –

- Parks and Gardens
- Commercial areas such as squares, plazas etc.
- Residential areas



LED Post-top



General description

Stylish, robust and reliable post top lantern using LEDs. Having good light distribution, limited upward light component that avoids light pollution, this luminaire is an affordable landscape lighting solution.

Features

- High energy savings
- Good light distribution
- Long life
- Maintenance free

Specifications		
Type	BGPI50	BGPI51
Light source	18 high power LED	24 high power LED
Lumen output	1000lm (WW), 1600lm (NW)	1500 (WW), 2100(NW)
Light color	Warm White (3000K)	Neutral White (4000K)
Power consumption	47W	60W
Driver	Integral type	Integral type
Nominal voltage	220-240V, 50 Hz	220-240V, 50 Hz
Optics	Closed diffuser	Closed diffuser
CRI	70	70
Mounting (OD)	60mm	60mm
Weight	6.3Kg.	6.3Kg.
Protection	IP 65, Class I	IP 65, Class I

Due to continuous change in LED technology the above values might change.

LED Wall mount



General description

Philips LED wall mount offers high level of durability with high impact resistance, ingress protection and comfortable soft lighting.

Features

- Consistent light output
- Long life
- Maintenance free

Specifications	
Type	BWS150
Light source	96 low power LED
Lumen output	180lm (WW), 200lm (NW)
Light color	Warm White (3000K), Neutral White (4000K)
Power consumption	8W
Driver	Integral type
Nominal voltage	220-240V, 50 Hz
Optics	Polycarbonate diffuser
CRI	>75
Weight	0.58Kg.
Protection	IP 65 / IK08 / Class I

Due to continuous change in LED technology the above values might change.

LED Bollard II



Variant



General description

Philips LED Bollard offers a high level of durability with high impact resistance. It is easy to install, comes with ingress protection and provides comfortable soft lighting.

Features

- Consistent light output
- Long life
- Maintenance free

Specifications		
Type	BCP150	BCP151
Light source	96 low power LED	96 low power LED
Lumen output	300lm (WW), 400lm (NW)	300lm (WW), 400lm (NW)
Light color	Warm White (3000K), Neutral White (4000K)	Warm White (3000K), Neutral White (4000K)
Power consumption	8W	8W
Driver	Integral type	Integral type
Nominal voltage	220-240V, 50 Hz	220-240V, 50 Hz
Optics	Closed diffuser	Closed diffuser
Mounting (OD)	Integral base plate	Integral base plate
CRI	>75	>75
Height	0.5 Mts	0.8 Mts
Weight	1.32Kg.	1.9Kg.
Protection	IP 65 / IK10 / Class I	IP 65 / IK10 / Class I

Due to continuous change in LED technology the above values might change.

Check list for installing LED outdoor lighting



LEDs in retail

Being successful in retail, requires you to provide a relaxing environment & comfort to shoppers. The more the shoppers stay at your store, better are the chances of them buying your merchandise. Lighting plays a critical role in creating the right environment in retail stores.





Entrances

Entrance of your store is the gateway to your brand. With effective lighting, you can attract shoppers and ensure they spend spend time in choosing the right merchandise.



Shop windows

Everybody is vying for attention. With proper lighting, your shop window can stand out in the crowd. Light can be directed wherever you want it. Also, by applying higher lighting levels to your display and avoiding dark rear walls in the background, you can avoid your window turning into a mirror.



Selling space and displays

It is here that your brand comes into its own. People need to see where they are walking and also view the products in the best way. Careful use of vertical lighting on walls can make your shop look more spacious.



In-store architecture

Shops often have interesting architectural features like interesting wall structures, an exposed girder, or columns. With careful lighting, you can make the stage more interesting for shoppers. It is all about crafting the right shopping experience. Creating the promise of something exciting, something out of the ordinary. Often such features can provide an inspiration for displaying products and for setting the scene for higher sales.

Bio-Planet
Leuven, Belgium



Brown Tree
Chennai, India

your health food

பிளாஸ்டிக் லீட்



Nuts n Spices
Chennai, India

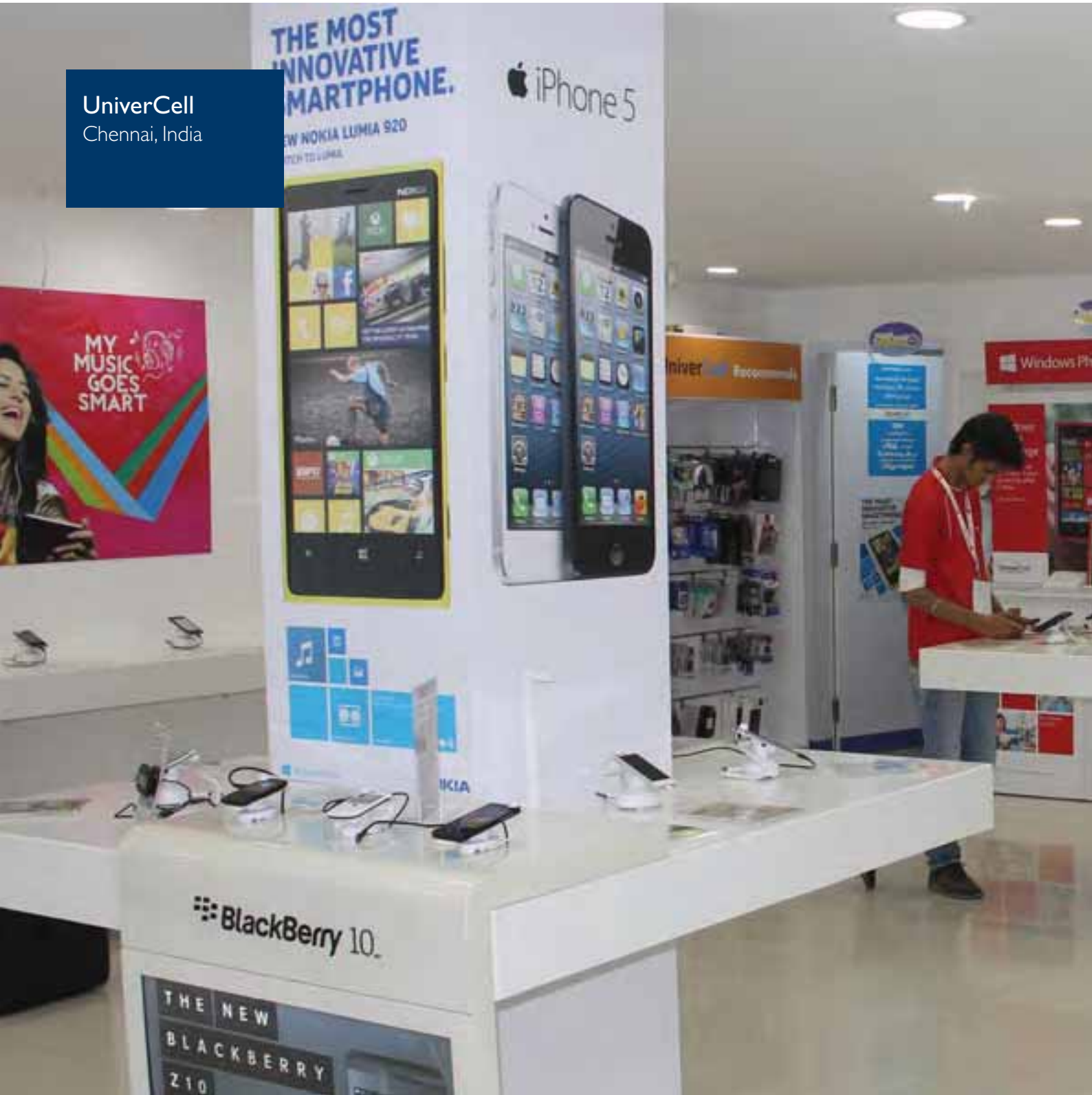


Heineken The City

Amsterdam,
The Netherlands



UniverCell
Chennai, India



more
Supermarkets
Bangalore, India



Zavar jewellers
Porbandar, India





Variants



General description

GreenSpace is a high performance LED downlighter with high system efficacy for good quality and uniform lighting. With its simple yet elegant design, it conforms to general lighting norms for offices, shops, and other indoor applications, providing an essential tool to owners, designers, and installers to explore energy saving practices.

Features

- Consistent light output
- Long life
- CRI >80

Specifications				
Type	GreenSpace Micro DN180B	GreenSpace Mini DN181B	GreenSpace Compact DN182B	GreenSpace Power DN183B
LED engine	DLED Micro	DLED Mini	DLED Compact	DLED Power
lumen package	600lm	1000lm	1500lm	2000lm
CFL replacement	up to 2x13W	up to 2x18W	up to 2x26W	up to 2x32W
CRI	80	80	80	80
CCT	Warm white: 3000K Neutral white: 4000K Cool white: 5000K	Warm white: 3000K Neutral white: 4000K Cool white: 5000K	Warm white: 3000K Neutral white: 4000K Cool white: 5000K	Warm white: 3000K Neutral white: 4000K Cool white: 5000K
Power (4000K)	8.5W	12W	18W	24W
System efficacy	70lm/W (3000K) 75lm/W (4000K, 5000K)	75lm/W (3000K) 78lm/W (4000K, 5000K)	78lm/W (3000K) 80lm/W (4000K, 5000K)	78lm/W (3000K) 80lm/W (4000K, 5000K)
Voltage	220V-240V/50, 60Hz	220V-240V/50, 60Hz	220V-240V/50, 60Hz	220V-240V/50, 60Hz
Driver	Integrated	Integrated	Integrated	Integrated
Optics	High quality diffuser	High quality diffuser	High quality diffuser	High quality diffuser
Cut out	Ø125mm	Ø152mm	Ø203mm	Ø203mm
Material	Heat sink: die-cast Diffuser: PMMA Reflector: PC Clip: steel	Heat sink: die-cast Diffuser: PMMA Reflector: PC Clip: steel	Heat sink: die-cast Diffuser: PMMA Reflector: PC Clip: steel	Heat sink: die-cast Diffuser: PMMA Reflector: PC Clip: steel
Ring Color	White (RAL9010)	White (RAL9010)	White (RAL9010)	White (RAL9010)
Installation	Spring Clip	Spring Clip	Spring Clip	Spring Clip
SDCM	5	5	5	5

GreenLEDi



Also available in
1200, 900, 600, 300 lumen

Variants



General description

GreenLEDi range is a breakthrough offering which combines modern product design, the latest LED technology and reliable heat management to deliver a long lasting efficient solution for offices and retail spaces. Offering substantial energy savings compared to CFL/halogen, good light quality, complete stylistic freedom and significant maintenance savings, the product is an ideal value for money replacement for conventional solutions.

Features

- 50%* energy saving
- 5 times more life over CFLs
- Long life of 40000* hours

Specifications	GreenLED i600 DN 191B	GreenLED i900 DN 192B	GreenLED i1200 DN 193B	GreenLED i1500 DN 194B
LED engine	DLED Micro	DLED Mini	DLED Compact	DLED Power
lumen package	6500K-600 4000K-600 3000K-600	6500K-1000 4000K-900 3000K-900	6500K- 4000K-1200 3000K-1200	6500K- 4000K-1500 3000K-1500
CRI	>70	>70	>70	>70
CCT	Warm white: 3000K Neutral white: 4000K Cool Daylight: 6500K	Warm white: 3000K Neutral white: 4000K Cool Daylight: 6500K	Warm white: 3000K Neutral white: 4000K Cool Daylight: 6500K	Warm white: 3000K Neutral white: 4000K Cool Daylight: 6500K
Power (4000K)	10W	15W	18W	24W
Voltage	220V-240V/50, 60Hz	220V-240V/50, 60Hz	220V-240V/50, 60Hz	220V-240V/50, 60Hz
driver	Constant current integrated driver	Constant current integrated driver	Constant current integrated driver	Constant current integrated driver
optics	High quality diffuser	High quality diffuser	High quality diffuser	High quality diffuser
Material	heat sink: die-cast diffuser: PMMA reflector: PC clip: steel	heat sink: die-cast diffuser: PMMA reflector: PC clip: steel	heat sink: die-cast diffuser: PMMA reflector: PC clip: steel	heat sink: die-cast diffuser: PMMA reflector: PC clip: steel
Installation	Spring Clip	Spring Clip	Spring Clip	Spring Clip
SDCM	5	5	5	5

*Conditions apply

LuxSpace HE



Variant



General description

These LED downlights with superior aesthetics and build quality suitable for applications that require a green general lighting solutions for instance in offices, shops, hotels and hospitals. Their extremely low power consumption results in significant energy savings compared with traditional CFL downlights.

Features

- 50%* energy saving
- Long life of 50000* hours
- Good color rendering

Specifications				
Type	LuxSpace Micro BBS478	LuxSpace Mini BS488/489	LuxSpace compact BBS498/499	Luxspace Compact Power BBS496
Light source	DLED Micro	DLED Mini	DLED Compact	DLED Compact Power
System lm output	560lm (3000K) 620lm (4000K)	1000lm (3000K) 1100lm (4000K)	2000lm (3000K) 2200lm (4000K)	2750 (3000K) 3100 (4000)
System Power consumption	8W	13W	28W	40.5W
System performance*	68lm/W(3000K) 75lm/W (4000K)	74lm/W(3000K) 81lm/W (4000K)	72lm/W(3000K) 80lm/W (4000K)	70lm/W(3000K) 78lm/W (4000K)
Lifetime	50k hours (L70)	50k hours (L70)	50k hours (L70)	50k hours (L70)
CCT	3000K / 4000K	3000K / 4000K	3000K / 4000K	3000K / 4000K
RA	>80	>80	>80	>80
Driver/control	Fixed and dimmable	Fixed Dimmable (DALI)	Fixed Dimmable (DALI)	Fixed Dimmable (DALI)
IP	Option of IP54 Version	Option of IP54 Version	Option of IP54 Version	Option of IP54 Version
Accessories	Glass disk with frosted inner part in suspended position SG-FRC Frosted-glass halo ring in suspended position SG-HR-FR Opal glass in suspended position SG-O			

*Conditions apply

AR111



General description

Delivering a warm, halogen-like accent beam, MASTER LEDspot LV AR111 is an ideal retrofit solution for spot and general lighting applications in the hospitality and retail industry. It is particularly suitable for general lighting where the light is on all the time, such as creative accent lighting applications in shops, restaurants, hotels, and especially for galleries, exhibitions and museums. The robustly designed MASTER LEDspot LV AR111 offers various beam angles for a clearly defined beam spread. There is no UV or IR in the beam, making it suitable for illuminating heat-sensitive objects like food, organic materials, paintings, etc. The patented intelligent driver enables broad compatibility with existing electromagnetic and electronic halogen transformers. MASTER LEDspot LV AR111 delivers huge energy savings and minimizes maintenance cost without any reduction in brightness.

Features

- Lower energy consumption: 15 / 75 W (12V)
- Patented intelligent driver
- Long life of 40,000* hours
- Low energy consumption
- Clearly defined beam spread
- Dimmable

Product description	Watt	Socket	Beam intensity (cd)	Beam angle	Lifetime (hours)	Lumens output	Efficiency lm/W	CRI	Color Temp.	Dimmable
AR111 2700K 24D	15	G53	4560	25	40,000	830	55	>80	2700	Yes
AR111 2700K 40D	15	G53	1660	40	40,000	830	55	>80	2700	Yes
AR111 2700K 24D	15	G53	4560	25	40,000	830	55	>80	2700	No
AR111 2700K 40D	15	G53	1660	40	40,000	830	55	>80	2700	No

Master LED GU10



General description

Efficient accent lighting is now possible with GU10 MASTER LED lamp. With no heat, UV or IR in the beam, it outperforms halogen lighting in terms of lighting while saving on energy and maintenance costs.

Features

- Low energy consumption: 4 W / 35 W, 7 W / 50 W, 8 W / 50 W+ (230 V -240 V)
- Long life of 40,000* hours
- Clearly defined beam spread
- UV- and IR-free light for less heat and protection for heat-sensitive objects

Product description	Watt	Socket	Beam intensity (cd)	Beam angle	Lifetime (hours)	Lumens output	Efficiency lm/W	CRI	Color Temp.	Dimmable
D 7-50W GU10 2700K 25D	7	GU10	1250	25	40,000	300	46	>80	2700	No
D 7-50W GU10 2700K 40D	7	GU10	500	40	40,000	300	46	>80	2700	No
D 7-50W GU10 4000K 25D	7	GU10	1400	25	40,000	310	46	>80	4000	No
D 7-50W GU10 4000K 40D	7	GU10	650	40	40,000	310	46	>80	4000	No
D 7-50W GU10 5600K 25D	7	GU10	1400	25	40,000	310	46	>80	5600	No
D 7-50W GU10 5600K 40D	7	GU10	650	40	40,000	310	46	>80	5600	No

Also used in
Office

Master LED MR16 6.5W



General description

Philips MASTER LED MR16 lamp integrates high power LED light source and compact high efficiency driver into a traditional halogen form factor. It is ideal for applications including track lighting, general architectural and landscape lighting.

Features

- Low energy consumption: 4 W / 20W, 6.5 W / 50 W (12V)
- Patented intelligent driver
- Retrofittable with low-voltage MR16 halogen lamps with GU5.3 socket

Product description	Watt	Socket	Beam intensity (cd)	Beam angle	Lifetime (hours)	Lumens output	Efficiency lm/W	Color Rendering Index	Color Temp.	Dimmable
4-20W 2700K MR16 24D	4	GU5.3	1000	24	45,000	210	52	>80	2700	No
4-20W 3000K MR16 24D	4	GU5.3	1100	24	45,000	220	55	>80	3000	No
6.5-50W 2700K MR16 24D	6.5	GU5.3	2000	24	25,000	380	58	>80	2700	No
6.5-50W 2700K MR16 36D	6.5	GU5.3	1200	36	25,000	380	58	>80	2700	No
6.5-50W 3000K MR16 24D	6.5	GU5.3	2030	24	25,000	390	60	>80	3000	No
6.5-50W 3000K MR16 36D	6.5	GU5.3	1250	36	25,000	390	60	>80	3000	No

LEDs in hospitality

Creating the right lighting both inside and outside your restaurants and hotels is critical for attracting guests. Philips LED lighting products and solutions, provide your guests the comfort they seek and at the same time help you save significantly on energy consumption and costs.





Receptions and lobbies

Hotel reception provides a welcoming ambience and creates the right impact on your guests. At this busy area where people come together and interact during all hours of the day, thoughtful lighting can make a long lasting impression on your guests.



Corridors and other transition areas

Corridors and other transition areas often lack natural daylight, but that doesn't mean they have to lack appeal. We have a variety of lighting solutions for brightening the mood and showing the way. And although such areas have to be illuminated whenever someone is present, the lights don't have to be on 24 hours a day.



Guest rooms and suites

Guests treating themselves to a few days of luxury or executives on a business trip deserve and expect 5 star treatment. We can help you give them exactly that and more! No expense has been spared in developing our state-of-the-art audio-visual solutions to offer your guests a profoundly enjoyable entertainment experience. Along with that our cutting-edge lighting solutions provide added visual comfort, creating that special ambience for a truly memorable stay.



Bars, restaurants and lounges

The right ambience is crucial. These are places where people go to unwind, socialize and enjoy themselves, but also to meet and entertain business associates. Through the strategic use of creative lighting you can make things stimulating and refreshing during the day and more intimate and laid back at night. Or the other way round! On top of that, uniquely appealing and premium-quality infotainment displays can act as a real magnet for guests.



Wellness areas

Wellness areas have become indispensable in hotels of all sizes. Gyms, saunas, swimming pools and massage rooms, as well as beauty salons, hairdressers and even spas, are becoming standard features. Whether you want to set the right ambience, ensure adequate levels of safety and security or provide some entertaining distraction for those trying to knock themselves into shape, we have plenty to offer.



Facades

The facade is one of the most potent calling cards of your hotel. Create an exterior that is distinctive, memorable and eye-catching and you can generate a significant amount of extra revenue while making sure you really stand out from the crowd. LEDs in particular, with their ability to produce millions of color combinations and sequence in an endless variety of patterns, are ideal for generating attention and reinforcing the projection of your brand.

Cafe Ludus
New Delhi, India



ITC Maurya Hotel
New Delhi, India



McDonald's
Mumbai, India

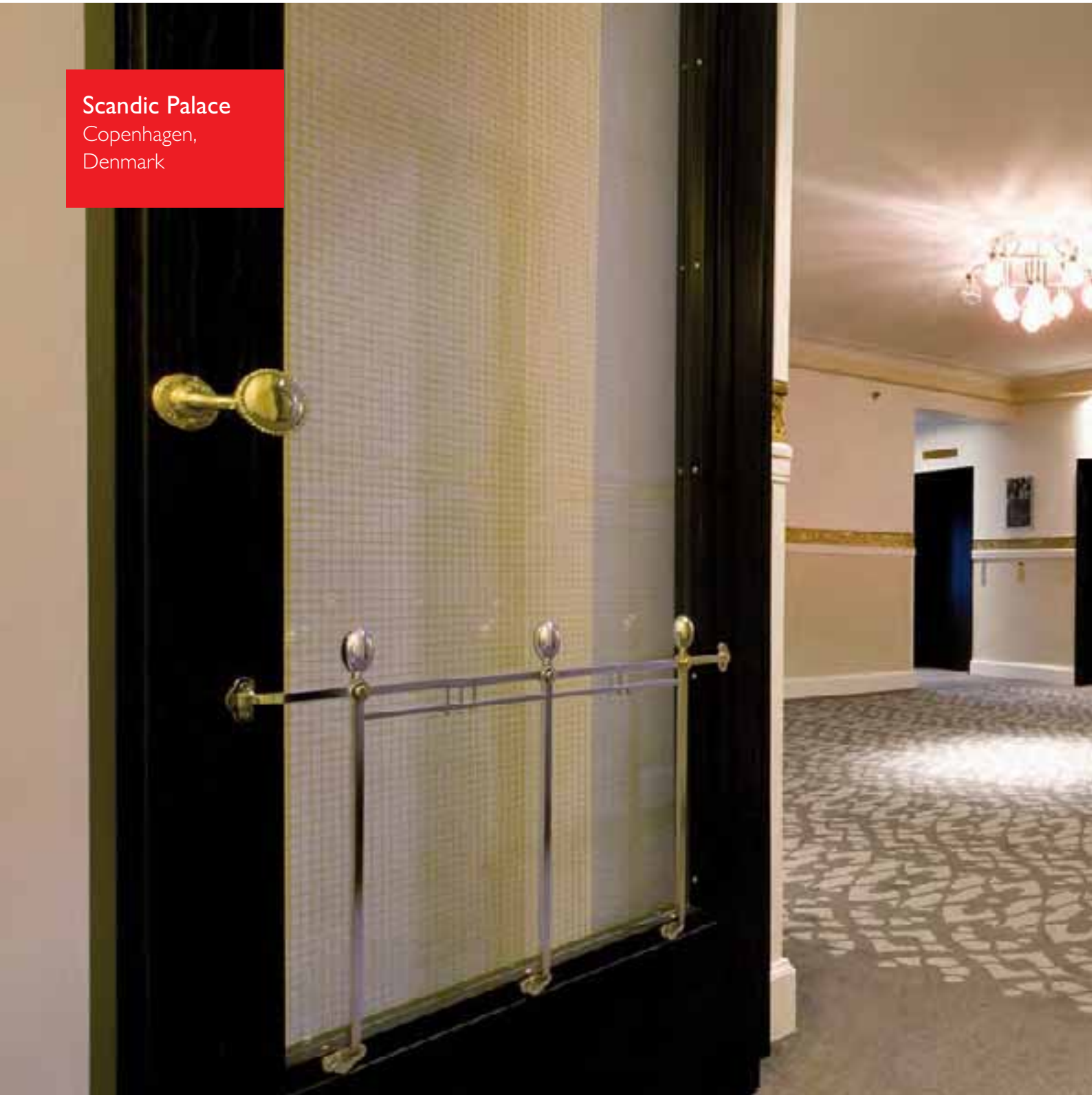


McDonald's
New Delhi, India



Scandic Palace

Copenhagen,
Denmark





The Westin Palace
Madrid, Spain

CitizenM
Amsterdam,
The Netherlands



Master LED GU10



General description

Efficient accent lighting is now possible with GU10 MASTER LED lamp. With no heat, UV or IR in the beam, it outperforms halogen lighting in terms of lighting while saving on energy and maintenance costs.

Features

- Low energy consumption: 4 W / 35 W, 7 W / 50 W, 8 W / 50 W+ (230 V -240 V)
- Long life of 40,000* hours
- Clearly defined beam spread
- UV- and IR-free light for less heat and protection for heat-sensitive objects

Product description	Watt	Socket	Beam intensity (cd)	Beam angle	Lifetime (hours)	Lumens output	Efficiency lm/W	CRI	Color Temp.	Dimmable
D 7-50W GU10 2700K 25D	7	GU10	1250	25	40,000	300	46	>80	2700	No
D 7-50W GU10 2700K 40D	7	GU10	500	40	40,000	300	46	>80	2700	No
D 7-50W GU10 4000K 25D	7	GU10	1400	25	40,000	310	46	>80	4000	No
D 7-50W GU10 4000K 40D	7	GU10	650	40	40,000	310	46	>80	4000	No
D 7-50W GU10 5600K 25D	7	GU10	1400	25	40,000	310	46	>80	5600	No
D 7-50W GU10 5600K 40D	7	GU10	650	40	40,000	310	46	>80	5600	No

NovaGlow E14 Candle



General description

Philips NovaGlow E14 CANDLE integrates a high power LED light source with an unique lens design to give sparkle effect. It can replace up to 20W GLS candle.

Features

- Standard GLS Candle form factor
- Ultra Energy efficient, replacement up to 20W GLS
- Available in 4W
- 20,000* hours average life time
- No external driver is required
- No mercury, UV and IR
- RoHS complaint
- CCT: 2700K
- Dimmable

Product description	Watt	Socket	Lifetime (hours)	Lumens output	Efficiency lm/W	Color Rendering Index	Color Temp.	Dimmable
Master LED 4W- E14 2700K 230V B35 CL DIM	4	E14	20,000	250	62	>80	2700	Yes

LuxSpace HE



Variant



General description

These LED downlights with superior aesthetics and build quality suitable for applications that require a green general lighting solutions for instance in offices, shops, hotels and hospitals. Their extremely low power consumption results in significant energy savings compared with traditional CFL downlights.

Features

- 50%* energy saving
- Long life of 50000* hours
- Good color rendering

Specifications				
Type	LuxSpace Micro BBS478	LuxSpace Mini BS488/489	LuxSpace compact BBS498/499	Luxspace Compact Power BBS496
Light source	DLED Micro	DLED Mini	DLED Compact	DLED Compact Power
System lm output	560lm (3000K) 620lm (4000K)	1000lm (3000K) 1100lm (4000K)	2000lm (3000K) 2200lm (4000K)	2750 (3000K) 3100 (4000)
System Power consumption	8W	13W	28W	40.5W
System performance*	68lm/W(3000K) 75lm/W (4000K)	74lm/W(3000K) 81lm/W (4000K)	72lm/W(3000K) 80lm/W (4000K)	70lm/W(3000K) 78lm/W (4000K)
Lifetime	50k hours (L70)	50k hours (L70)	50k hours (L70)	50k hours (L70)
CCT	3000K / 4000K	3000K / 4000K	3000K / 4000K	3000K / 4000K
RA	>80	>80	>80	>80
Driver/control	Fixed and dimmable	Fixed Dimmable (DALI)	Fixed Dimmable (DALI)	Fixed Dimmable (DALI)
IP	Option of IP54 Version	Option of IP54 Version	Option of IP54 Version	Option of IP54 Version
Accessories	Glass disk with frosted inner part in suspended position SG-FRC Frosted-glass halo ring in suspended position SG-HR-FR Opal glass in suspended position SG-O			

*Conditions apply

GreenLEDi



General description

GreenLEDi range is a breakthrough offering which combines modern product design, the latest LED technology and reliable heat management to deliver a long lasting efficient solution for offices and retails spaces. Offering substantial energy savings compared to CFL/halogen, good light quality, complete stylistic freedom and significant maintenance savings, the product is an ideal value for money replacement for conventional solutions.

Features

- 50%* energy saving
- 5 times more life over CFLs
- Long life of 40000* hours

Specifications	GreenLED i600 DN 191B	GreenLED i900 DN 192B	GreenLED i1200 DN 193B	GreenLED i1500 DN 194B
LED engine	DLED Micro	DLED Mini	DLED Compact	DLED Power
lumen package	6500K-600 4000K-600 3000K-600	6500K-1000 4000K-900 3000K-900	6500K- 4000K-1200 3000K-1200	6500K- 4000K-1500 3000K-1500
CRI	>70	>70	>70	>70
CCT	Warm white: 3000K Neutral white: 4000K Cool Daylight: 6500K	Warm white: 3000K Neutral white: 4000K Cool Daylight: 6500K	Warm white: 3000K Neutral white: 4000K Cool Daylight: 6500K	Warm white: 3000K Neutral white: 4000K Cool Daylight: 6500K
Power (4000K)	10W	15W	18W	24W
Voltage	220V-240V/50, 60Hz	220V-240V/50, 60Hz	220V-240V/50, 60Hz	220V-240V/50, 60Hz
driver	Constant current integrated driver	Constant current integrated driver	Constant current integrated driver	Constant current integrated driver
optics	High quality diffuser	High quality diffuser	High quality diffuser	High quality diffuser
Material	heat sink: die-cast diffuser: PMMA reflector: PC clip: steel	heat sink: die-cast diffuser: PMMA reflector: PC clip: steel	heat sink: die-cast diffuser: PMMA reflector: PC clip: steel	heat sink: die-cast diffuser: PMMA reflector: PC clip: steel
Installation	Spring Clip	Spring Clip	Spring Clip	Spring Clip
SDCM	5	5	5	5

*Conditions apply

Color Kinetics



Railway Station
Vijayawada, India





Asian Paints,
Mumbai, India



County Hall
London, UK

Gateshead
Millennium Bridge
Newcastle, UK



Color Kinetics latest product range

Theatrical / Touring



ColorBlaze TRX

ColorBlaze

ColorBlast TRX

ColorBlast TR

iW Blast TR

Graze / Wash



ColorGraze MX Powercore

ColorGraze QLX Powercore

ColorGraze EC Powercore

ColorFuse Powercore

ColorBlast Powercore

ColorBlast 12

ColorBlast 6

Flood / Spot



iColor MR gen3

ColorReach Powercore gen2

ColorReach Compact Powercore

ColorBurst Powercore

ColorBurst Compact Powercore

ColorBlast 6

Cove



iColor Cove MX Powercore

iColor Cove QLX Powercore

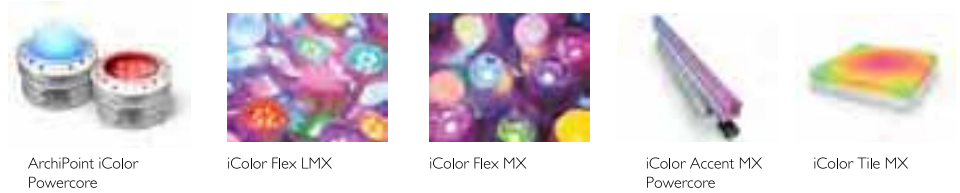
iColor Cove EC Powercore

iColor Cove QLX

iColor Cove EC

eW Cove MX Powercore with Precision Dimming

Direct View



ArchiPoint iColor Powercore

iColor Flex LMX

iColor Flex MX

iColor Accent MX Powercore

iColor Tile MX

Task / Downlight



eW Downlight Powercore gen2

eW Profile MX Powercore

eW Profile Powercore

Controllers



Video System Manager Pro

Light System Manager

iPlayer3

ColorDial Pro

iColor Keypad

Controller Accessories



Controller Keypad

Ethernet Controller Keypad

AuxBox

Multi-Protocol Converter

PoE Switch / PoE Injector

LEDs: 1960 to today

1960

- Red LEDs used as small indicator lights in electronic devices
- First green and yellow LEDs

1970

- LEDs used in watches, calculators, electronics, traffic lights
- First blue LEDs

1980

- First super-bright red LEDs